



LEWIS SCHOOL
OF ENGLISH

southampton

Adult School

**Prices, Booking &
Further Information 2010**

effective learning in a warm and friendly atmosphere

Booking your Course

How to Enrol

To book a course please send or fax the completed Application for Enrolment with 2 photos and the enrolment fee (£70)* to:

Lewis School of English
33 Palmerston Road
Southampton
SO14 1LL, UK

or to the local representative of the Lewis School. Alternatively, you can book your course on our website, www.lewis-school.co.uk

As soon as we receive your application we will confirm your booking and send you a letter of acceptance and an invoice.

*Please note that the enrolment fee is an administrative charge. It is not part of the course fee and is non-returnable.

How to Pay

You may transfer fees in the following ways:

A) by sending a cheque from a sterling bank account

B) by bank transfer in sterling to:

Lewis Schools Ltd
National Westminster Bank
12 High Street
Southampton
UK

Account Number: 58539204
Bank Sort Code: 56-00-68
SWIFT CODE: NWBKGB2L
IBAN Code: GB06 NWBK 5600 6858 5392 04

You must pay all bank charges. Please check with your bank when you make the transfer. You will be asked to settle all unpaid bank charges on arrival.

C) by travellers cheque or cash on arrival

D) by credit card (see Application for Enrolment)

Please note that if you are booking your course online, you will need to post or fax us your credit / debit card details. Please visit our website and print the Credit / Debit Card Payment form.

Conditions

Please read the following conditions carefully before booking your course.

1) Acceptance of enrolment, evidenced by confirmation of your booking, will constitute a legally binding agreement, governed by English Law, for the period specified on the enrolment form.

2) Cancellation

In the case of cancellation only the enrolment fee will be charged plus bank charges in the case of a refund. In the case of cancellation less than 7 days before the start date, one week's accommodation will be charged (if applicable). You have a 'cooling off' period of 7 days from the date of registration.

3) Postponement

You may postpone your starting date, if necessary, by giving the school a minimum of 7 days notice. All fees will be transferred to a later starting date.

4) Payment

All fees in respect of services specified on the Application for Enrolment 2010 are due for payment in full on or before the starting date. The School reserves the right not to provide such services in the event that such fees have not been paid by the starting date.

5) Tuition Fee Refunds

You are not entitled to a refund if you leave the course early, if you do not attend classes or for days when the school is closed for public holidays. Unused accommodation fees are refundable.

6) Homestay Administration Fee

The School keeps £7 per week from the published homestay prices as a contribution towards the administrative costs. The balance is paid to the family.

7) Shared Rooms in Homestay

Shared accommodation is initially charged at the single room rate. The shared room discount of £10 per week is only applied on completion of a week sharing with another student.

8) Homestay during Christmas / New Year Closure

All homestay accommodation during the 2-week Christmas / New Year closure is full-board.

9) Public Holidays

The School will be closed on the following dates in 2010:

*21 Dec 2009 to 1 Jan 2010 inclusive
2 Apr, 5 Apr, 3 May, 31 May, 30 Aug,
20 Dec to 3 Jan 2011 inclusive*

10) Insurance

You are advised to take out a comprehensive medical, travel and personal insurance.

11) The Lewis School reserves the right to change prices and programmes as shown in the brochure without prior notice.

12) In the case of serious misconduct the student may be required to leave immediately in which case no refund will be made. The School will be the sole arbiter of what constitutes serious misconduct. All students, whether or not adjudged guilty of serious misconduct, will be required to pay for any damage caused.

13) The Lewis School does not accept liability for accidents, loss or theft. This does not negate your statutory rights.

Summary of Courses & Fees 2010

Year-Round Courses

Start any week; finish any week. Suitable for all levels. All Prices in GBP (£).

	1-3 Weeks	4-6 Weeks	7-9 Weeks	10-12 Weeks	13-20 Weeks	21-30 Weeks	30+ Weeks
General English 15 hours	153 <i>per week</i>	143 <i>per week</i>	135 <i>per week</i>	126 <i>per week</i>	119 <i>per week</i>	116 <i>per week</i>	112 <i>per week</i>
Intensive English 22.5 hours	222 <i>per week</i>	207 <i>per week</i>	195 <i>per week</i>	184 <i>per week</i>	175 <i>per week</i>	168 <i>per week</i>	163 <i>per week</i>
Super Intensive English* 30 hours	291 <i>per week</i>	271 <i>per week</i>					

*Super Intensive English is available from 28 Jun – 13 Aug only. It is also available for 7 weeks at £271 per week.

	1 Week	2 Weeks	3 Weeks	4 Weeks
Private (1:1) Tuition* 15 hours	618	1205	1763	2291
Private (1:1) Tuition* 22.5 hours	927	1807	2644	3436
Combination Course C1 (General English plus 4.5 hours of Private (1:1) Tuition)	322	644	953	1256
Combination Course C2 (General English plus 7.5 hours of Private (1:1) Tuition)	435	869	1287	1698

*All other Private (1:1) Tuition is charged at £44 per hour

Seasonal Courses

Available at fixed times during the year. All Prices in GBP (£).

	Weeks	Dates	Minimum Level	Price
Academic Year Programme 2010 15 - 22.5 hours	37 (33 plus 4 weeks' holiday)	6 Apr – 17 Dec 10	All	4820
Academic Year Programme 2010-11 15 - 22.5 hours	37 (33 plus 4 weeks' holiday)	20 Sep 10 – 3 Jun 11	All	4892
IELTS Examination Course 15 hours	10	4 Jan – 12 Mar 29 Mar – 4 Jun 14 Jun – 20 Aug 27 Sep – 3 Dec	Intermediate Plus	1822*
CAE Examination Course 15 hours	12	15 Mar – 4 Jun 13 Sep – 3 Dec	Advanced	1814*
FCE Examination Course 15 hours	10	29 Mar – 4 Jun 27 Sep – 3 Dec	Higher Intermediate	1589*
LCCI Examination Course 15 hours	4	18 Jan – 12 Feb 12 Apr – 7 May 26 Jul – 20 Aug	Intermediate / Higher Intermediate	703*
TOEIC Examination Course 15 hours	4	15 Feb – 12 Mar 24 May – 18 Jun 23 Aug – 17 Sep	Intermediate / Higher Intermediate	703*
Teaching Methodology Course 15 hours	2	21 Jun – 2 Jul 5-16 Jul 19-30 Jul 2-13 Aug	Higher Intermediate	383
Evening Course 4 hours (Tue & Wed)	10	12 Jan – 17 Mar 13 Apr – 16 Jun 13 Jul – 15 Sep 12 Oct – 15 Dec	All	340

*Price includes coursebook but not exam registration fee. Exams are taken locally shortly before or after the course ends – see www.lewis-school.co.uk for dates.

PLEASE NOTE: In addition to the fees quoted, a £70 enrolment fee applies to all new students (excludes Evening Course).

Accommodation Prices 2010

Homestay Accommodation

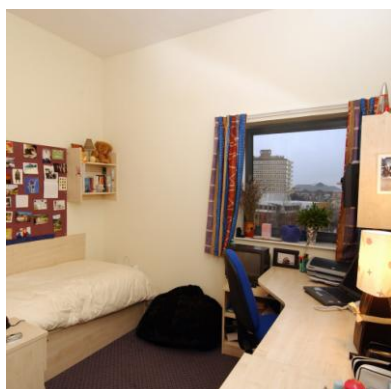
	Half Board	Full Board
Regular Homestay	97	107
Executive Homestay	137	147

- **Executive Homestay** provides you with a private bathroom.
- **Half Board** includes breakfast and evening meal Monday to Friday, plus all meals at the weekend.
- **Full Board** also includes a packed lunch Monday to Friday.
- Shared rooms are also available at a discount of £10 per person per week.
- All prices are in GBP per week.
- A premium of £10 per week will be applied from 20/6/10 to 22/8/10.
- Before you arrive, we will send you details of your host family and information about living in the UK as an international student.



Residential Accommodation (summer only)

	Self-Catering	Half-Board
Single en-suite room	120	273
Studio apartment - single	158	310
Studio apartment - double	180 (per couple)	485 (per couple)



- This accommodation is available from 10 July to 5 September only (*limited availability from 27 June to 10 July – please check at time of booking*)
- The residence is a 5-minute walk from the Lewis School and the city centre.
- **Single en-suite rooms** are in shared apartments with 4 or 5 rooms sharing a kitchen and living room.
- **Single studios** are private apartments with a single bed, study area, kitchen area and bathroom.
- **Double studio apartments** are as above, but are slightly larger and have a double bed.
- **Half board** includes breakfast at Parkafe and evening meal at La Tavernetta restaurant. Both are within a 5-minute walk from the school and the residence.
- All rooms are fully furnished. Bed linen, towels and kitchen utensils are provided.
- Cleaning and a change of towel and bed linen is provided on a weekly basis.
- Free Internet access is available in all rooms (you must bring your own laptop).
- There is a coin-operated laundry within the residence.
- The residence also has a common room with TV.
- All prices are in GBP per week.

Additional Courses in Summer

Teaching Methodology Course

A methodology course for non-native speaker teachers, designed to acquaint you with useful approaches, techniques, ideas and materials for your classes. Most on the course have already been teaching for some time, but it is equally useful for those just beginning their career. Please note, this course is designed for teachers of secondary school students and/or adults.

Week 1 (15 hours)	Week 2 (15 hours)
<ul style="list-style-type: none">• Introduction and overview of methodologies. Communicative Language teaching.• Presenting language at different levels.• Use of games.• Creating and exploiting different resources and materials.• Teaching vocabulary and study skills.	<ul style="list-style-type: none">• Teaching pronunciation.• Use of Internet, multimedia and video.• Use of songs.• Mime and story-telling.• Teaching reading, writing and listening skills.

You will also have the opportunity to observe English classes at the school.

2010 Course Dates

21 June – 2 July, 5-16 July,
19-30 July, 2-13 August

Your main tutor will be Richard Hamilton DELTA. Richard will be assisted by other experienced Lewis School teachers.



Course Fee

£383 (plus £70 enrolment fee)

This course is free for teachers who bring groups of students to the school.

Super Intensive English

Maximise your learning with our 30-hour course, available from 28 June to 13 August.

	1-3 Weeks	4-7 Weeks
Price per week (GBP)	291	271



Academic Year Programme 2010

First Term 6 Apr – 25 Jun 2010 (15 - 22.5 hours per week)

The first term is designed to give you a solid basis at the beginning of your course.

General English plus afternoon modules	
6 Apr – 25 Jun	General English (12 weeks) You will be placed in a class to suit your level. We usually have six to eight levels at the school.
12 weeks	Additional afternoon modules <ul style="list-style-type: none"> • Pronunciation (1 week) • Study Skills (1 week) • Business English (1 week) • Cultural Studies (1 week) • Writing Skills (2 weeks)
26 Jun - 25 Jul	Holiday (4 weeks)

Second Term 26 Jul – 17 Dec 2010 (15 hours per week)

In the second term, you will follow one of four routes, depending on your aims and your English level after the first term. We will also provide personal guidance during your course and with your university / college application if needed.

	Route 1	Route 2	Route 3	Route 4		
Week beginning	Suitable for higher level students	For higher level students wishing to apply to university	For Intermediate students	For Lower Intermediate students	Week beginning	
26 Jul	LCCI Business Exam Course (4 weeks)	LCCI Business Exam Course or Pre-IELTS Course (4 weeks)	LCCI Business Exam Course (4 weeks)	LCCI Business Exam Course (4 weeks)	26 Jul	
2 Aug					2 Aug	
9 Aug					9 Aug	
16 Aug					16 Aug	
23 Aug	General English (3 weeks)	TOEIC Exam Course (4 weeks)	TOEIC Exam Course (4 weeks)	TOEIC Exam Course (4 weeks)	23 Aug	
31 Aug					31 Aug	
6 Sep					6 Sep	
13 Sep	CAE Exam Course (12 weeks)	General English (1 week)	General English (1 week)	General English (3 weeks)	13 Sep	
20 Sep					20 Sep	
27 Sep					27 Sep	
4 Oct					4 Oct	
11 Oct					General English & Listening / Reading Skills Module* (2 wks)	11 Oct
18 Oct						18 Oct
25 Oct					PET Exam Course	25 Oct
1 Nov						1 Nov
8 Nov						8 Nov
15 Nov						15 Nov
22 Nov	22 Nov					
29 Nov	29 Nov					
6 Dec	General English (2 weeks)	General English (2 weeks)	General English (2 weeks)	General English (2 weeks)	6 Dec	
13 Dec					13 Dec	

You are asked to pay a non-refundable £100 deposit to book your place on the Academic Year Programme. The balance is due on or before the start date. Please note some courses are subject to numbers and may be substituted if they are undersubscribed. The programme fees include all tuition, enrolment fee and examination coursebooks. They do not include exam registration fees, which are between £40 and £120 depending on the exam.

* 22.5 hours per week



Application for Enrolment 2010

Complete and send or fax to the Lewis School of English

Personal Information

Family Name	
First Name	
Date of Birth	d ___ / m ___ / y _____
Sex	<input type="radio"/> Male <input type="radio"/> Female
Nationality	
Mother Tongue	
Occupation	
Passport Number	

Contact Details

Address	
Postcode	
Country	
Telephone	
Mobile	
Fax	
Email	

Contact Details for Billing (if different)

Name	
Address	
Postcode	
Country	
Telephone	
Fax	
Email	
Relationship to student	

Course Chosen

- General English
 Intensive English
 Super Intensive English
 Private (1:1) Tuition – 15 hours / week
 Private (1:1) Tuition – 22.5 hours / week
 Combination Course – C1
 Combination Course – C2
 Academic Year Programme 2010
 Academic Year Programme 2010-11
 IELTS
 CAE
 FCE
 LCCI
 TOEIC
 Teaching Methodology Course
 Evening Course

Course Information

Number of Weeks

Start Date (dd/mm/yy) ___ / ___ / ___

Additional Course

If you would like to start another course after the one above, fill in the section below.

Course Name

Number of Weeks

Start Date (dd/mm/yy) ___ / ___ / ___

Your English Level

- Beginner Poor Medium Good

I have studied English for ___ years.

How did you hear about the Lewis School? _____



Accommodation

No Yes (please give dates and choose type)

Arrival Date ___ / ___ / _____

Leaving Date ___ / ___ / _____
 day / month / year

Homestay Accommodation

- Regular Homestay** Half Board (£97 / week)
- Regular Homestay** Full Board (£107 / week)
- Executive Homestay** Half Board (£137 / week)
- Executive Homestay** Full Board (£147 / week)
- I want a shared room (£10 discount per week)

Name of person sharing _____

Full board includes packed lunch Monday to Friday. A premium of £10 per week applies from 20/6/10 to 22/8/10.

- Smoking house Non-smoking house I don't mind
- House with children with no children I don't mind
- House with pets with no pets I don't mind

Residential Accommodation (see page 4)

- Single en-suite room** Self-catering (£120 / week)
- Single en-suite room** Half Board (£273 / week)
- Studio apartment: single** Self-catering (£158 / week)
- Studio apartment: single** Half Board (£310 / week)
- Studio apartment: double** Self-catering (£180 / week)
- Studio apartment: double** Half Board (£485 / week)

Airport Transfer

Taxi service to your accommodation (single journey)

- No Heathrow (£100) Gatwick (£100)
- Stansted (£160) Bournemouth Airport (£75)

Health

Do you suffer from any physical or mental health problems?

- No Yes (please give details)

Use a separate sheet if necessary

Are you currently taking any medication?

- No Yes (please give details)

Do you suffer from any allergies?

- No Yes (please give details)

Do you have any special dietary requirements, eg vegetarian, Muslim, vegan?

- No Yes (please give details)

Payment Details

Please calculate the total amount payable. A 2% premium will be added to all payments by credit card.

Enrolment Fee	£70
Course fees	
Accommodation fees	
Airport Transfer	
Total	

Please charge £ _____ to the card below.

- credit card debit card
- Visa Switch MasterCard Diners Club
- Maestro Solo JCB

Cardholder's Name

Card number (16-digit)

- - -

Expiry Date ___ / ___

Security Code (3-digit) ___

Cardholder's Signature

I have read and agree to the Conditions of Enrolment. I enclose an enrolment fee of £70 and I will pay the full fee by bank transfer or on arrival.

Signature _____

Date _____

Signature of parent (if student under 18)

